



***LOOKING FOR QUALITY JOB SITE TRAILERS OR
MODULAR BUILDINGS? LOOK NO FURTHER!***

RENT , LEASE OR PURCHASE

Office Trailers
Lunchrooms, Classrooms
Washroom Trailers
Portable Storage
Office Complexes (1-2 Storey)
Water/Septic Tank Trailers
Portable Maintenance Shops
Custom Modular Buildings
Recreational Facilities

Call us Today! (800) 456-1800
or (506) 433-3757
98 Cogle Road, Sussex Corner, NB

www.alantraleasing.com

Who is Alantra?

Alantra Leasing Inc. is a family owned company from Sussex, NB that has provided Atlantic Canada's contractors and businesses with quality, modern office space and custom job site solutions since 1981.

Why choose Alantra?

- Friendly, helpful sales team = excellent customer service!
- Prompt Quotes within hours
- Quick deliveries from large stock (same day or next day in most cases)
- Custom trailers to meet your specific needs
- New, modern, clean trailers with many standard features
- Family owned business who really cares about providing their customers with clean, quality office space

Alantra trailers are designed and manufactured in Sussex, NB with distribution and maintenance centers throughout NB, NS, PE, Quebec and NL.

Our Story

Company was started in 1981 by a local prefabricated home manufacturer.

In 1998, Alantra was purchased by John and Marcus deWinter with a fleet of approximately 50 trailers serving mostly construction contractors in NB and NS.

Since 2002, Alantra has built up its fleet to more than 300 trailers, expanded the delivery fleet and broadened its stock with various custom trailers and buildings. We now serve all of Eastern Canada including Newfoundland and Quebec.

Alantra is now offering Modular Building and specialty solutions for other industries such as oil & gas drilling/exploration, mining, government depts., municipalities, private business office expansions, etc.

Our staff has grown from a handful to 40 employees strong with certified engineers and carpenters on staff that can take your custom desires from design straight through to construction, delivery and setup within weeks.



Standard Trailer Features:

- Air Conditioning, Electric Heat
- Electrical mast, meter box
- Communications Panel
- Drawing tables, desk area
- Security bars on all windows
- Bulletin boards, wire shelving
- Well insulated for year round use
- Very well Maintained and modern new fleet
- Painted MDF walls

Optional Features:

- Metal rental steps for entrance doors (wheeled trailers)
- WIFI internet service with optional landline
- Furniture rental – tables, chairs, desks, filing cabinets
- Insurance – fire and theft of unit only – contents, vandalism not covered

Alantra's Job Site Trailer Solutions

Offices/Lunchrooms

20x8 Open
20x10 Open
28x10 Offices
30x10 Offices
40x10 Offices
40x10 Offices, ½ Bath
40x12 Offices
60x12 Offices
60x12 Offices, ½ Bath

Washrooms

12x10 Wasteless Washroom
28x10 Water/Septic Trailer
25x10 Washroom
32x12 Washroom
32x12 Male/Female
33x10 Washroom w/Showers

Cottages

40x12 Cottage
50x12 Cottage
60x12 Cottage

Portable Storage

18x12 Heated Trailer
20' Containers
28x10 Storage/Office Trailer
28x12 Heated Trailer
38x12 Heated Trailer

Miscellaneous

Portable Maintenance Shop
Tarp Building
Hand Washing Stations
Flat Bed Trailers
Weather Shelter
Portable Fishing Shelter
Sportsman Recreation Trailer

Custom Modular Buildings

Training facility
Gatehouses/Security Buildings
Office Complexes (1-2 Storey)

Classrooms

40x10 Open
36x14 Open

Mining/Drilling Facilities

Well Site Living Trailers
Day Trailers
Mining Camps / Bunkhouses
Light Towers/Generators

Testimonials

We are very happy with the Office Trailers and Office Complex Alantra Leasing has built and delivered to Churchill Falls, Labrador for us recently. Their ability to deliver to remote locations and complete the setup within a short period of time shows their commitment to customer satisfaction. We are also impressed with the quality and custom details they put into their Office Buildings/Trailers. We look forward to future projects with Alantra Leasing.

Steve Christiansen

Asplundh Tree Service ULC

Dartmouth, NS

We have utilized Alantra's services for both long and short term shelter rentals for a number of years for various projects around the Maritimes. We have found that they are price competitive, their equipment is reliable and most important, they strive to meet very quick turnaround times which the industry today demands. We recommend them very highly for any project large or small.

Rick Bryenton

Purchasing Manager

Sunny Corner Enterprises

www.scei.ca

We have been doing business with Alantra's for over a year on our projects in the Maritimes and are extremely satisfied with their service and prices. With their vast selection of units, we are certain that they will be able to meet all our needs. We would not hesitate to use their services for our future projects.

Martin Veilleux

Logistics Director

Pomerleau inc.

www.pomerleau.ca

AMEC Americas has purchased trailers and leased trailers from Alantra Leasing recently. Whether trailers were purchased or leased, the level of professionalism exhibited by Alantra Leasing was well above expectations. Prices were always competitive, deliveries were prompt and a staff that was always accommodating and very pleasant to deal with. Alantra Leasing rose to the safety standards implemented by AMEC and successfully completed the work without incident.

Alantra's service before, during and after setup was exceptional. The Alantra staff quickly resolved any issues or changes we requested and always went out of their way to ensure complete customer satisfaction. I certainly look forward to working with Alantra Leasing on future projects.

Clay Dodd

Procurement / Contracts Manager

AMEC Americas, Ltd.

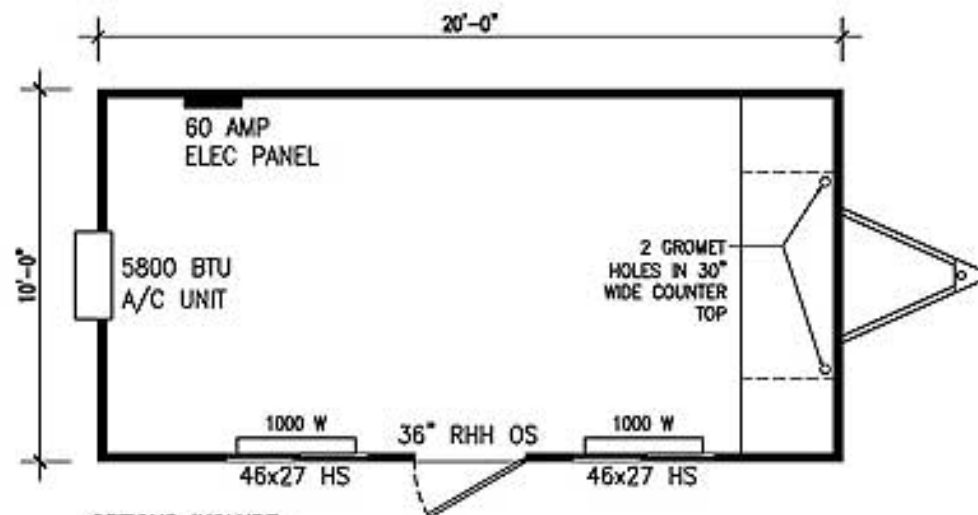
PCS Picadilly Project



ALANTRA LEASING



OFFICE TRAILERS



OPTIONS INCLUDE:

- THERMOPANE VINYL SLIDING WINDOWS
- STEEL BARS ON INSIDE OF WINDOWS
- 5800 BTU A/C UNIT

20' x 10'

Open Unit

UNIT #

AL03-005

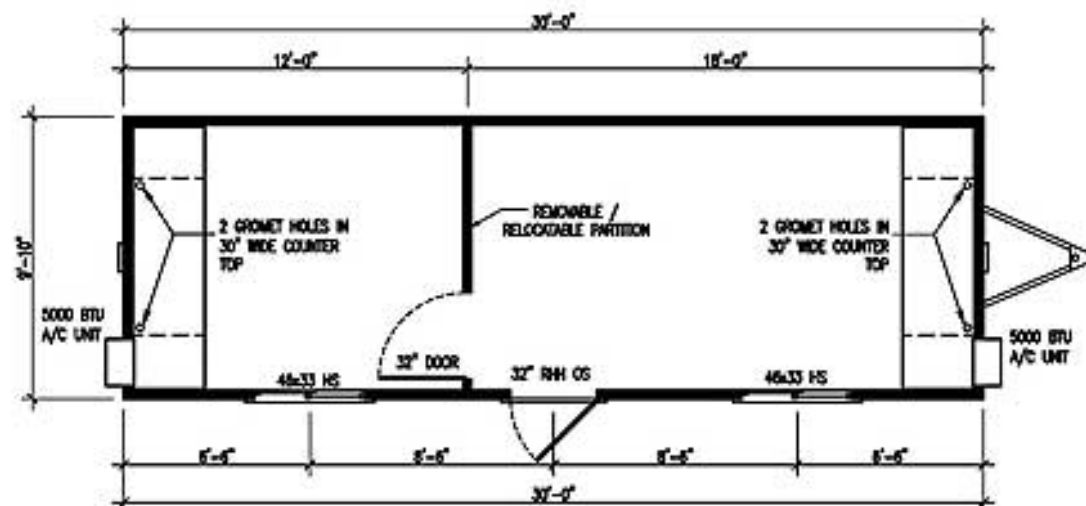
Scale 1/4"=1'-0"

PLEASE NOTE, THE ABOVE FLOOR PLAN IS MEANT AS A GUIDE ONLY, SLIGHT VARIATIONS MAY OCCUR

REV.	DESCRIPTION	DATE

ALANTRA
LEASING INC

MOBILE OFFICE TRAILERS
PH: 1-800-456-1800



30' x 10' A/C

Two Office Unit

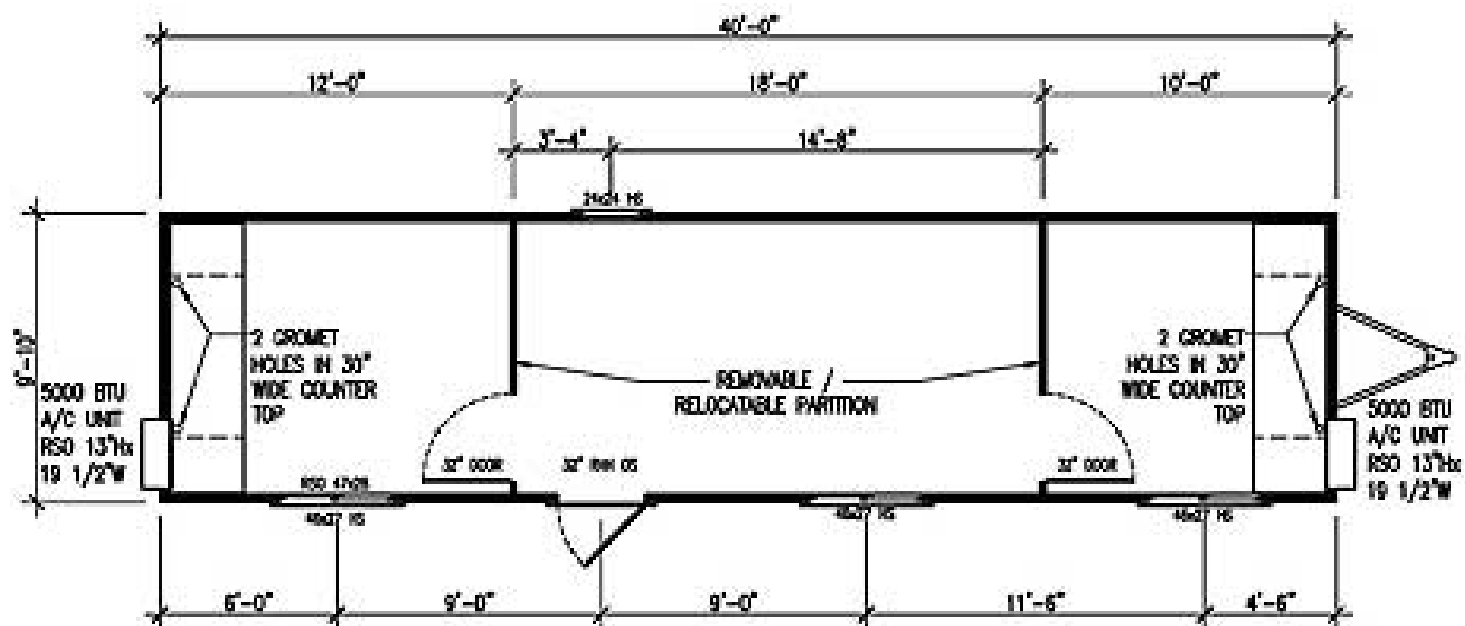
UNIT #

AL08-101

Scale 3/16"=1'-0"

PLEASE NOTE, THE ABOVE FLOOR PLAN IS MEANT AS A GUIDE ONLY, SLIGHT VARIATIONS MAY OCCUR

REV.	DESCRIPTION	DATE
ALANTRA LEASING INC		
MOBILE OFFICE TRAILERS PH: 1-800-456-1800		



40' x 10' A/C

Three Office

UNIT #

AL06-047

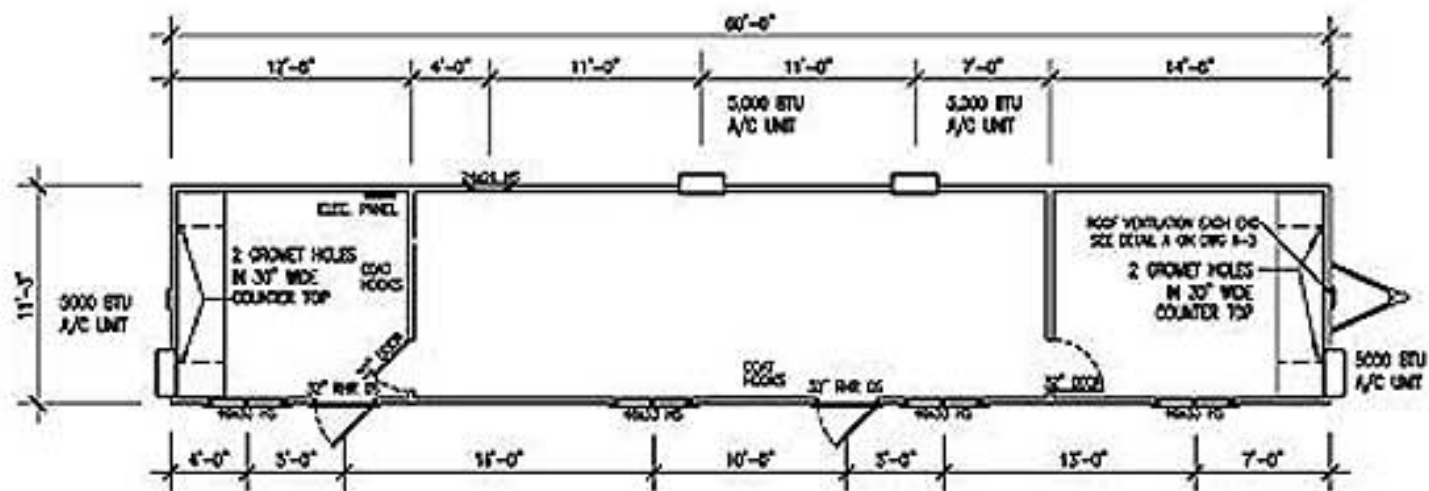
Scale 3/16"=1'-0"

PLEASE NOTE, THE ABOVE FLOOR PLAN IS MEANT AS A GUIDE ONLY. SLIGHT VARIATIONS MAY OCCUR

REV.	DESCRIPTION	DATE

ALANTRA
LEASING INC

MOBILE OFFICE TRAILERS
PH: 1-800-456-1800



FLOOR PLAN

SCALE 1/8" = 1'-0"

60' x 12' A/C

3 Office

UNIT #

-

Scale 1/8" = 1'-0"

PLEASE NOTE, THE ABOVE FLOOR PLAN IS MEANT AS A GUIDE ONLY, SLIGHT VARIATIONS MAY OCCUR

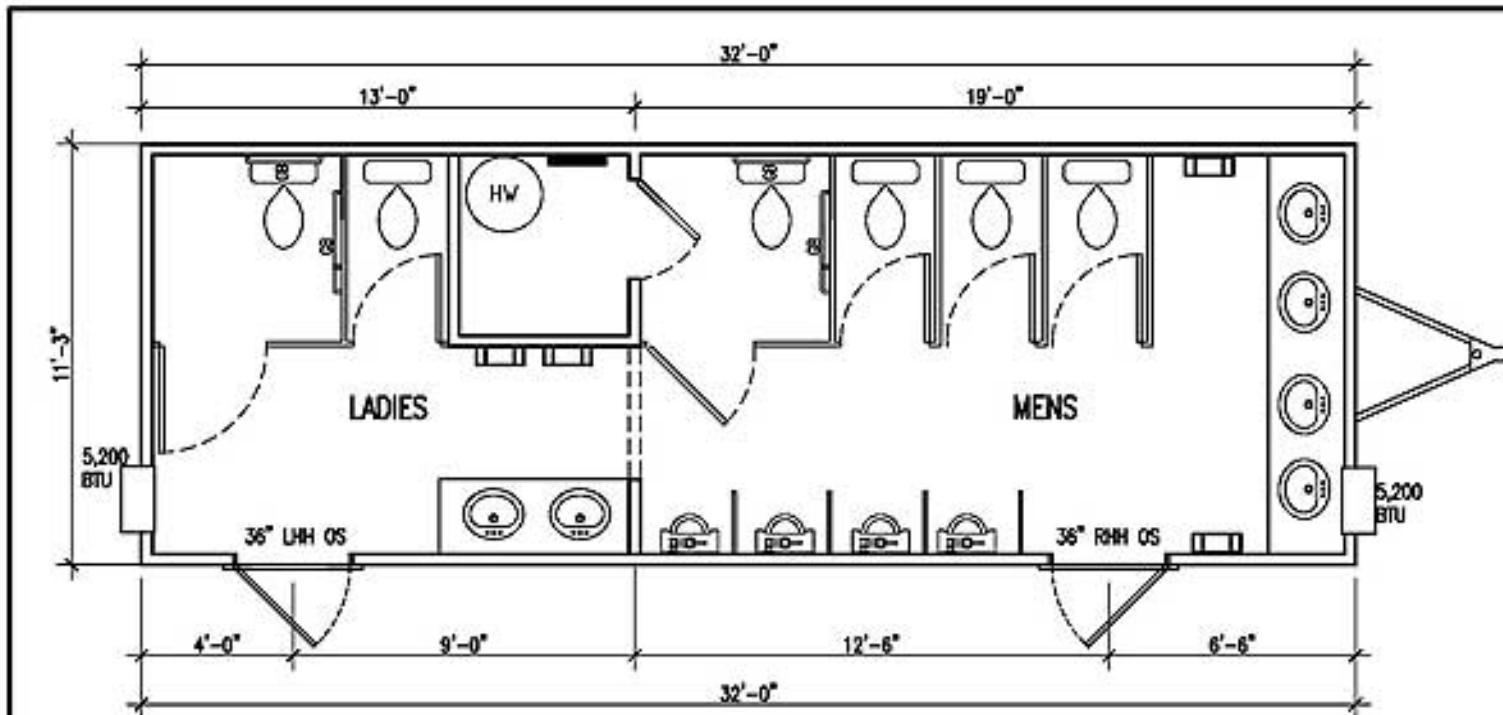
REV.	DESCRIPTION	DATE
ALANTRA LEASING INC		
MOBILE OFFICE TRAILERS PH: 1-800-456-1800		



16x8 Office on the Go—Instant Internet, Phone, Power. Haul it yourself!



Washroom Trailers



32' x 12' Washroom Trailer

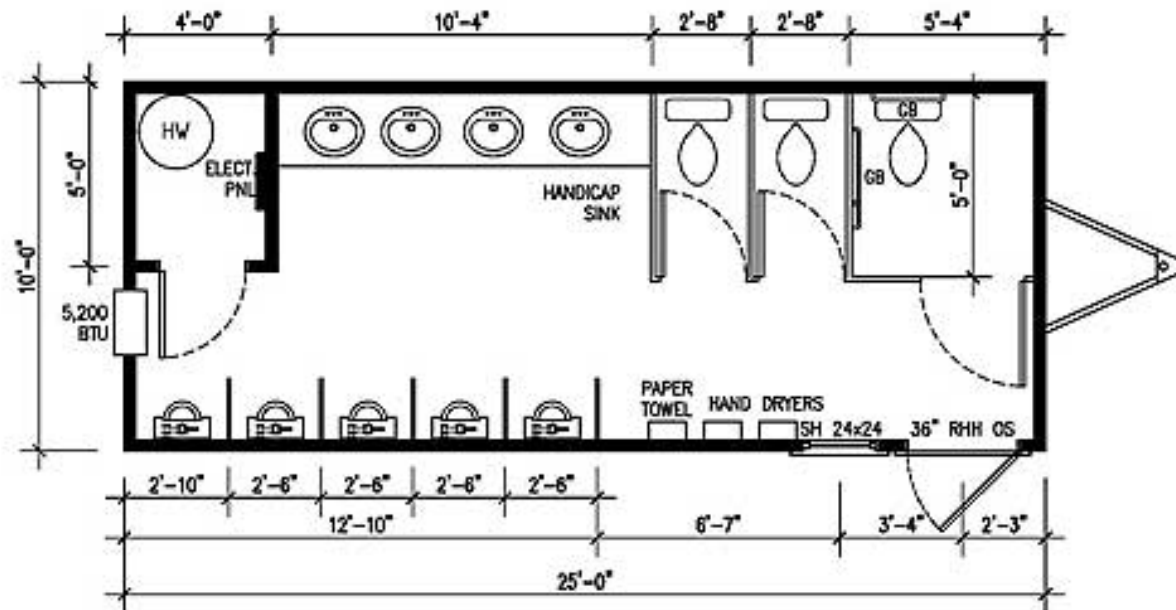
UNIT #

AL09-170

Scale 1/4"=1'-0"

PLEASE NOTE, THE ABOVE FLOOR PLAN IS MEANT AS A GUIDE ONLY, SLIGHT VARIATIONS MAY OCCUR

REV.	DESCRIPTION	DATE
ALANTRA LEASING INC		
MOBILE OFFICE TRAILERS PH: 1-800-456-1800		



25' x 10' A/C

Washroom Trailer

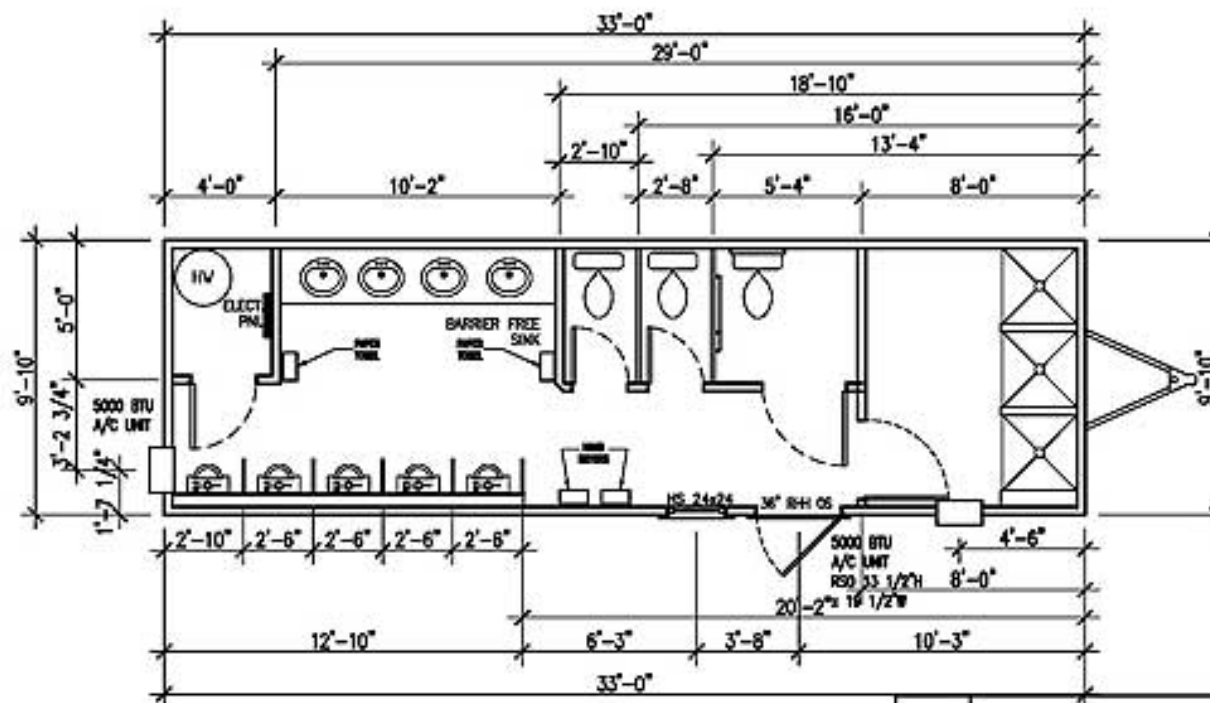
UNIT #

AL06-029

Scale 1/4"=1'-0"

PLEASE NOTE, THE ABOVE FLOOR PLAN IS MEANT AS A GUIDE ONLY, SLIGHT VARIATIONS MAY OCCUR

REV.	DESCRIPTION	DATE
ALANTRA LEASING INC		
MOBILE OFFICE TRAILERS PH: 1-800-456-1800		



33' x 10'

Washroom & Shower Trailer

UNIT #

AL09-169

Scale 1/4"=1'-0"

PLEASE NOTE, THE ABOVE FLOOR PLAN IS MEANT AS A GUIDE ONLY, SLIGHT VARIATIONS MAY OCCUR

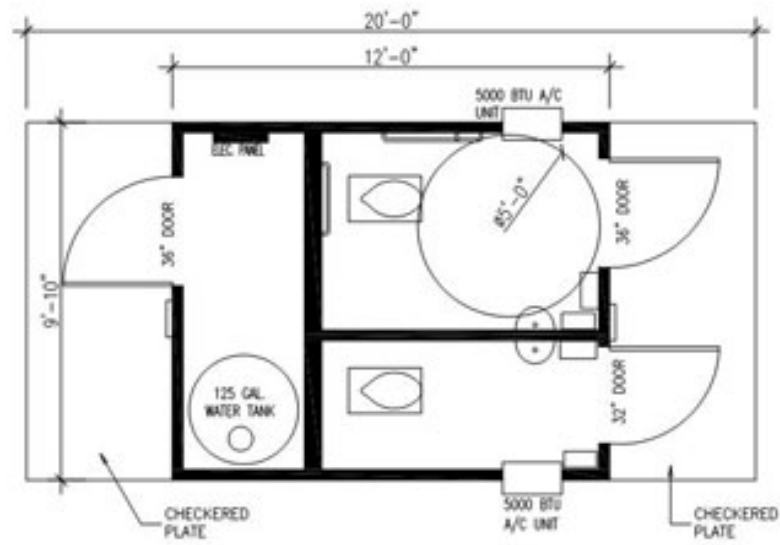
REV.	DESCRIPTION	DATE

ALANTRA
LEASING INC

MOBILE OFFICE TRAILERS
PH: 1-800-456-1800



Wasteless Washroom (Incinerators)



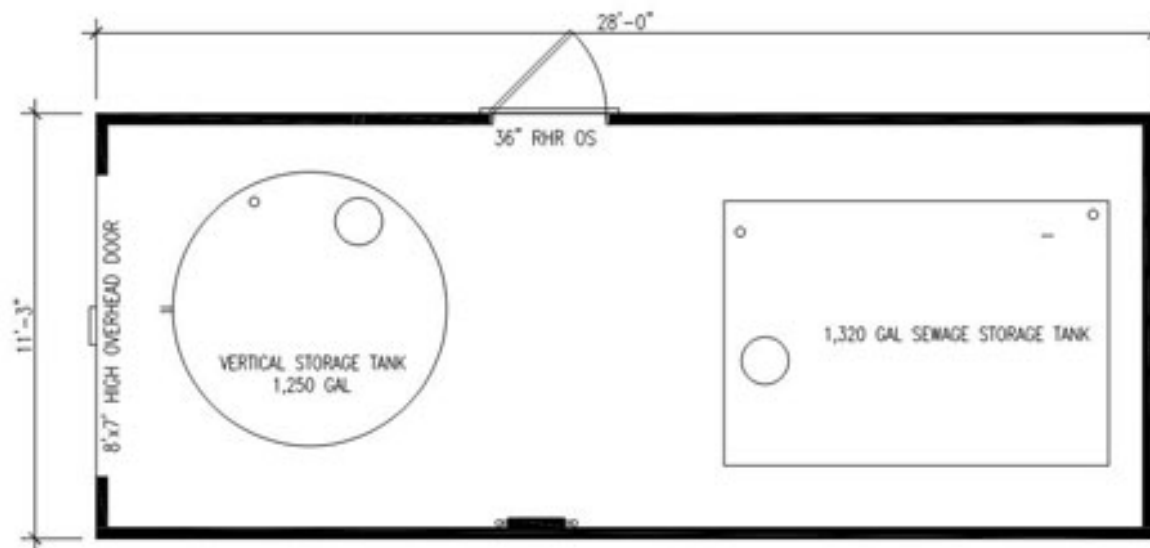
12'x10'
Potty on Skid
UNIT #
AL10-313
 Scale 3/16"=1'-0"

PLEASE NOTE, THE ABOVE FLOOR PLAN IS MEANT AS A GUIDE ONLY, SLIGHT VARIATIONS MAY OCCUR

REV.	DESCRIPTION	DATE
ALANTRA LEASING INC MOBILE OFFICE TRAILERS PH: 1-800-456-1800		



Water/Septic Tank Trailer



FLOOR PLAN

SCALE: 1/4" = 1'-0"

- 1" WATER SUPPLY LINE
- 4" SEWER LINE

28' x 12' A/C

Water & Septic

UNIT #

AL10-312

Scale 1/4"=1'-0"

PLEASE NOTE, THE ABOVE FLOOR PLAN IS MEANT AS A GUIDE ONLY, SLIGHT VARIATIONS MAY OCCUR

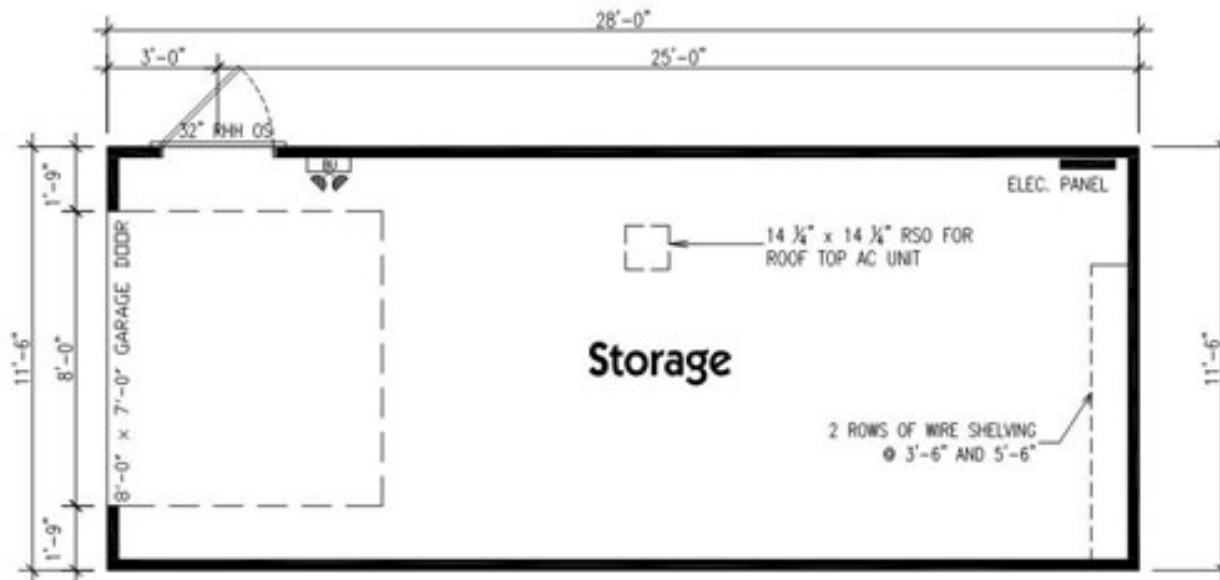
REV.	DESCRIPTION	DATE

ALANTRA
LEASING INC

MOBILE OFFICE TRAILERS
PH: 1-800-456-1800



Portable Storage Trailers-Heated, A/C, Lights
Storage Containers



28' x 12' A/C Storage Trailer

UNIT #

AL10-325

Scale 3/16"=1'-0"

PLEASE NOTE, THE ABOVE FLOOR PLAN IS MEANT AS A GUIDE ONLY, SLIGHT VARIATIONS MAY OCCUR

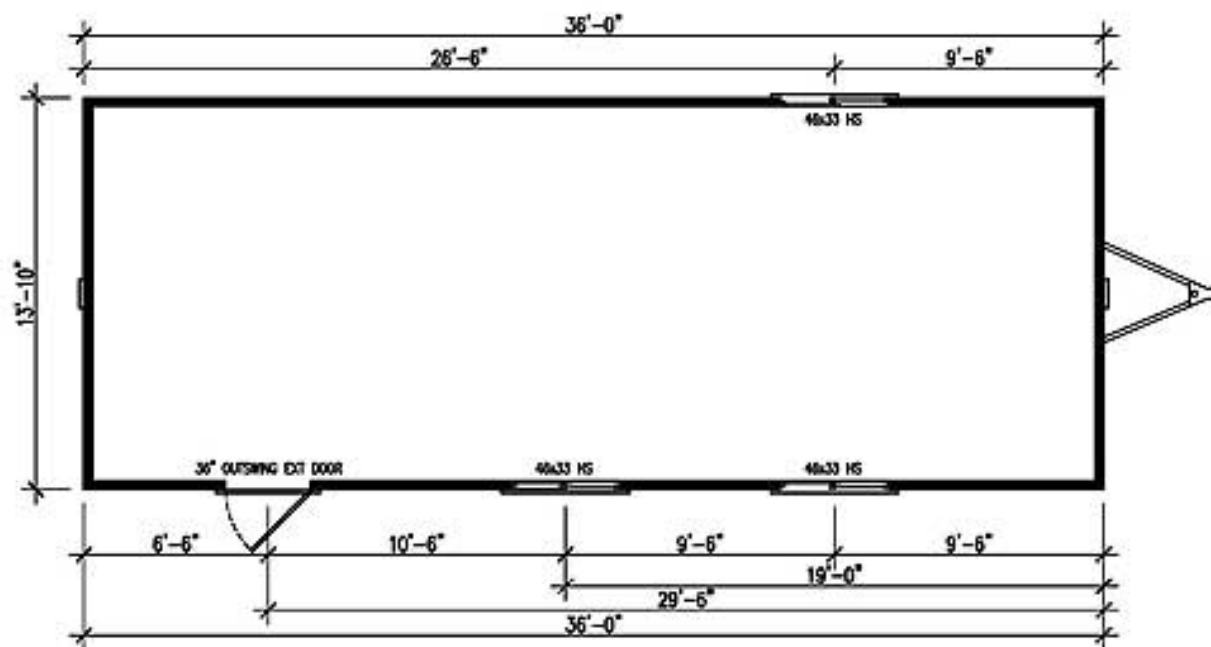
1	IFC	OCT 29/10
REV.	DESCRIPTION	DATE

ALANTRA
LEASING INC

MOBILE OFFICE TRAILERS
PH: 1-800-456-1800



Classroom Trailer (open)



36' x 14'

Open Unit

UNIT #

AL08-134

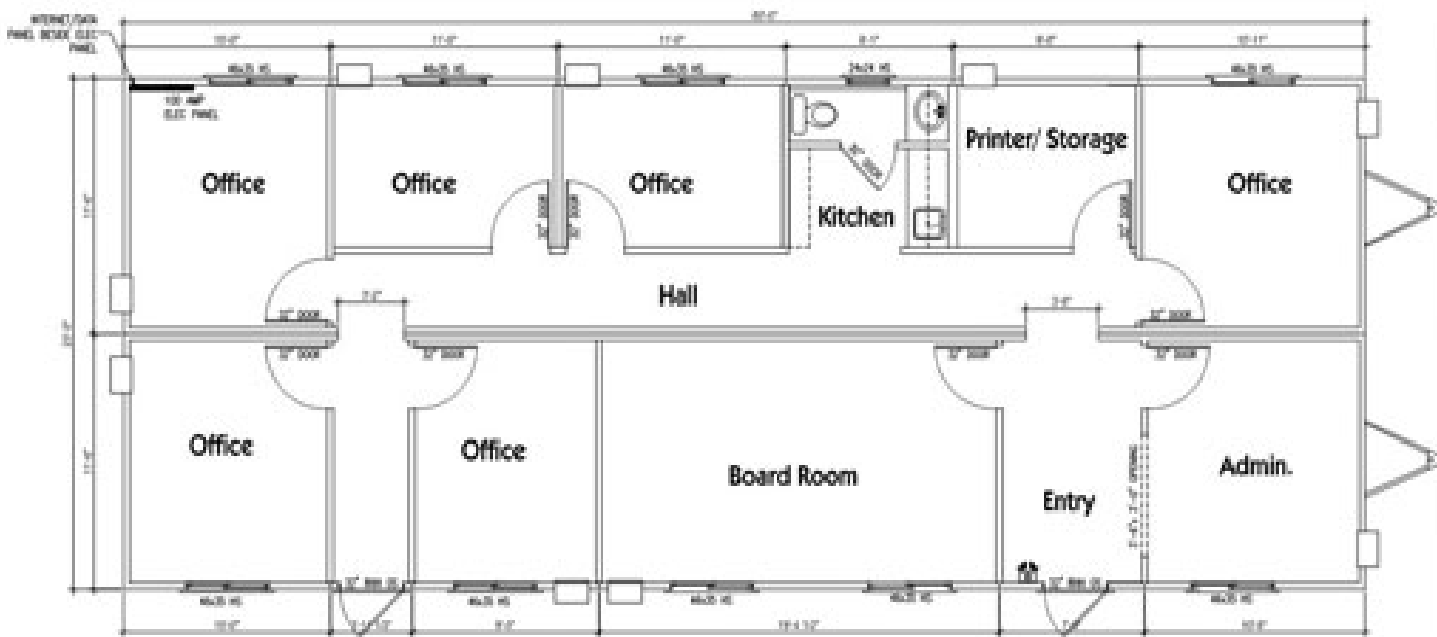
Scale 3/16"=1'-0"

PLEASE NOTE, THE ABOVE FLOOR PLAN IS MEANT AS A GUIDE ONLY, SLIGHT VARIATIONS MAY OCCUR

REV.	DESCRIPTION	DATE
ALANTRA LEASING INC MOBILE OFFICE TRAILERS PH: 1-800-456-1800		



OFFICE COMPLEX



60X24

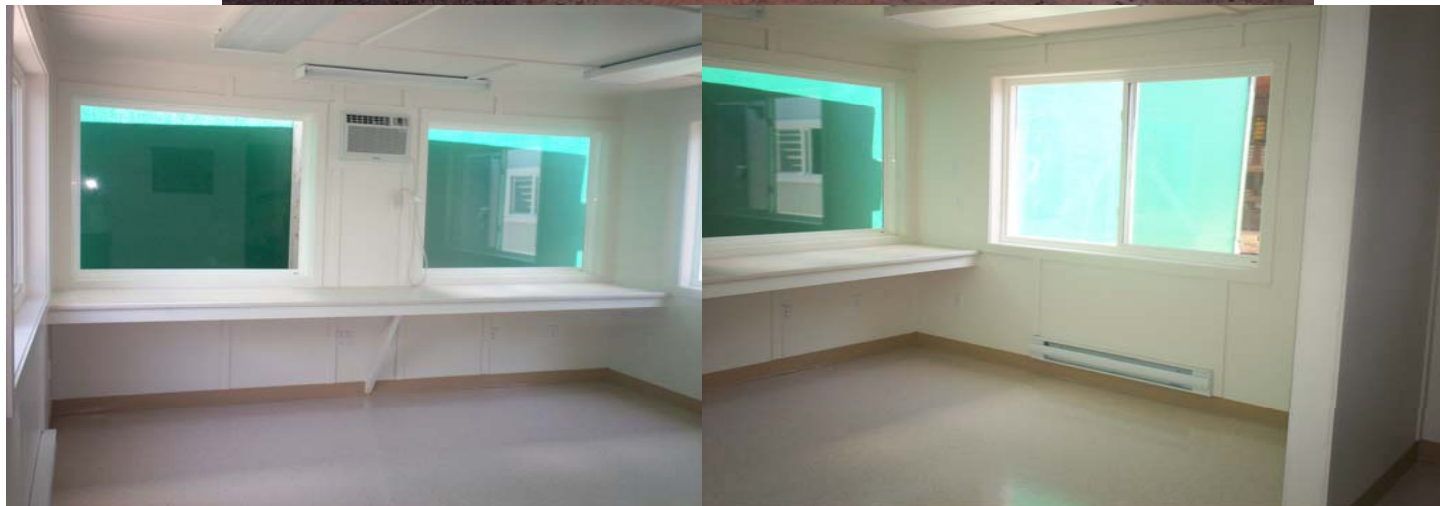
0	IFC	-
REV.	DESCRIPTION	DATE

A-1
OF 7

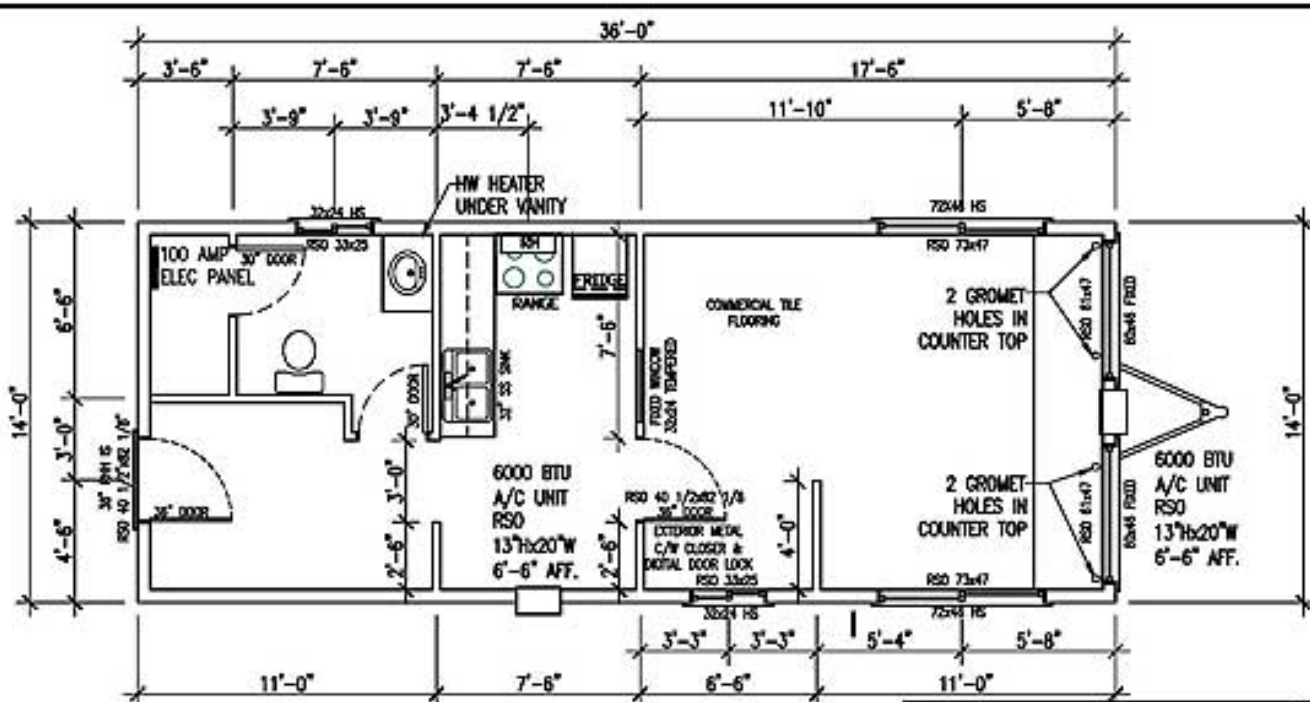
Drawing Title	FLOOR PLAN
Date	JULY 2010
Drawn By	RSC
Scale	AS NOTED

Project Title: **60' x 24' OFFICE UNIT A**
SERIAL # AL 10-

ALANTRA LEASING INC.
P.O. Box 4375
11700 Maple Road
Houston, TX 77044-4375
Tel: (281) 433-1111
Fax: (281) 433-1111



GATEHOUSE



36' x 14' A/C

Gatehouse Unit

UNIT #

AL07-097

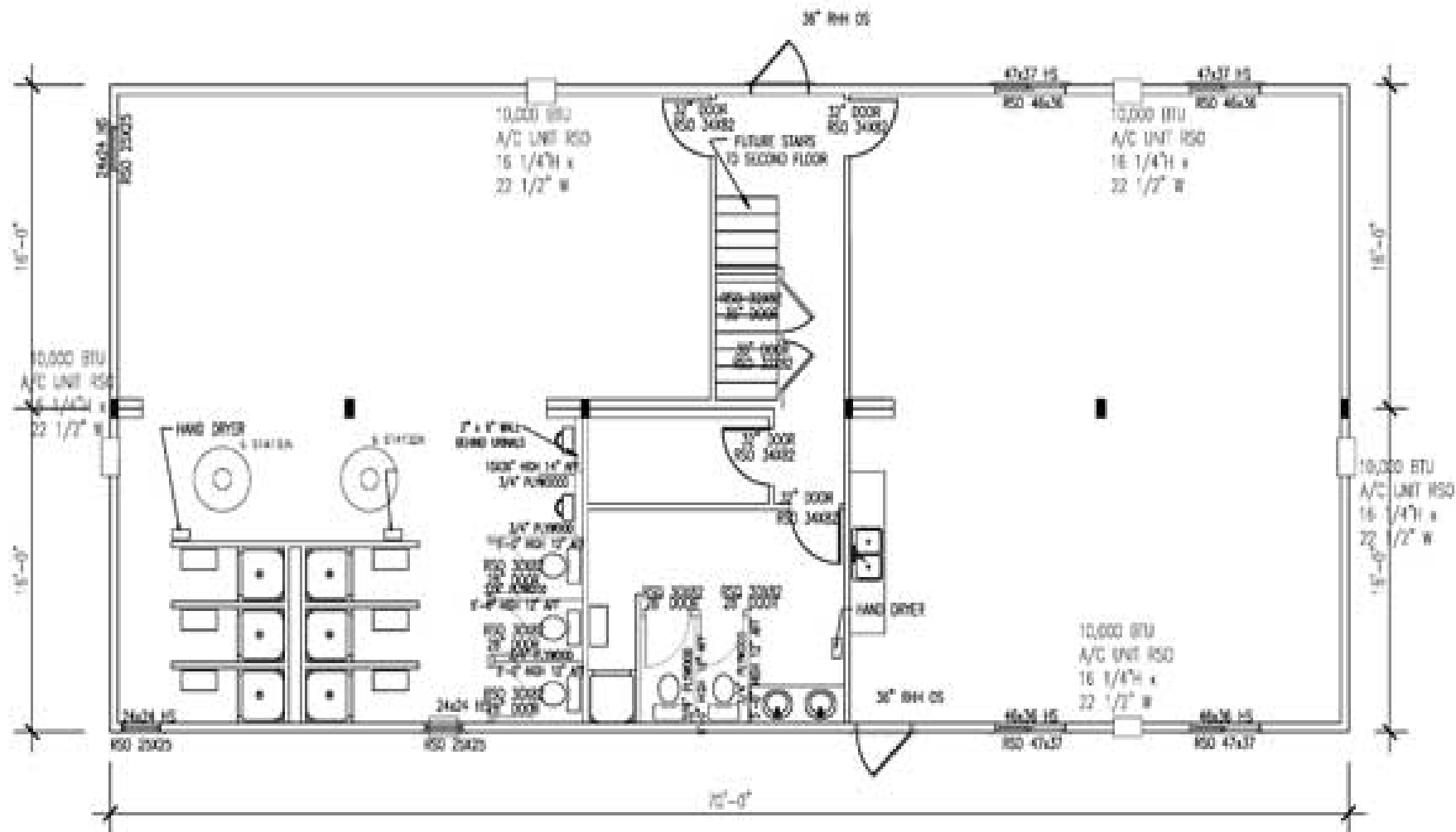
Scale 3/16"=1'-0"

PLEASE NOTE, THE ABOVE FLOOR PLAN IS MEANT AS A GUIDE ONLY, SLIGHT VARIATIONS MAY OCCUR

REV.	DESCRIPTION	DATE
ALANTRA LEASING INC		
MOBILE OFFICE TRAILERS PH: 1-800-456-1800		



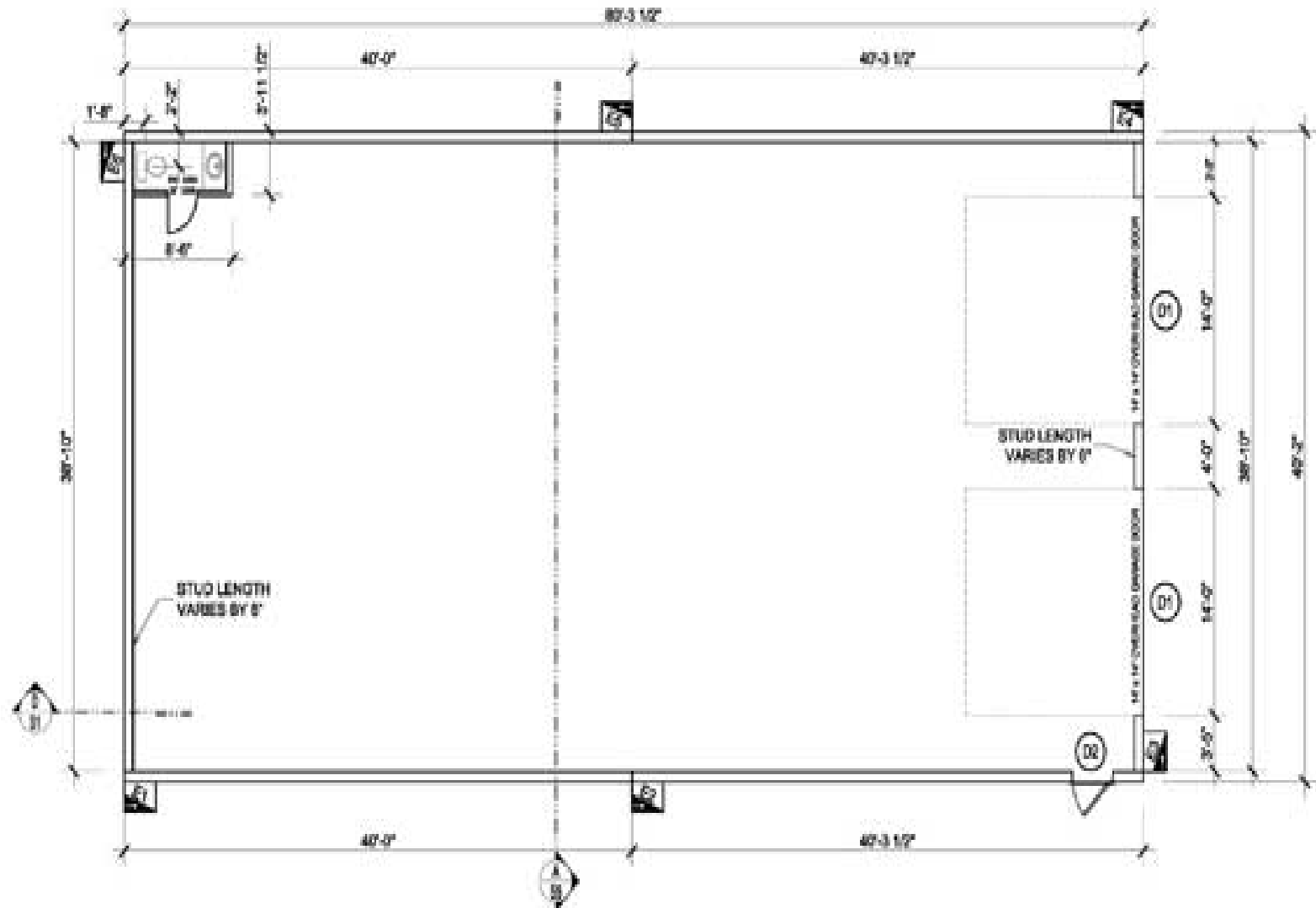
Training Facility



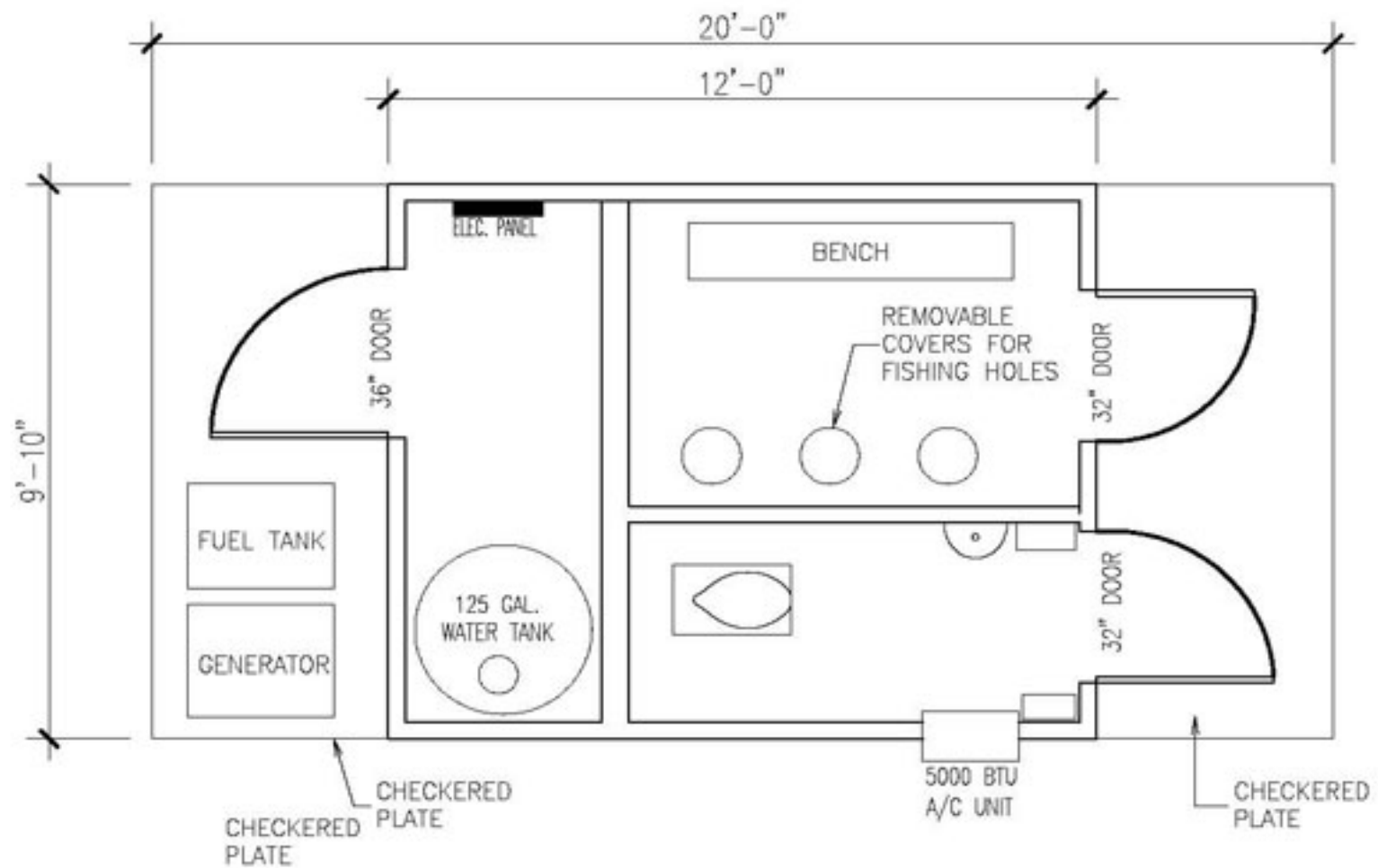
Training Facility



Hand Wash Station



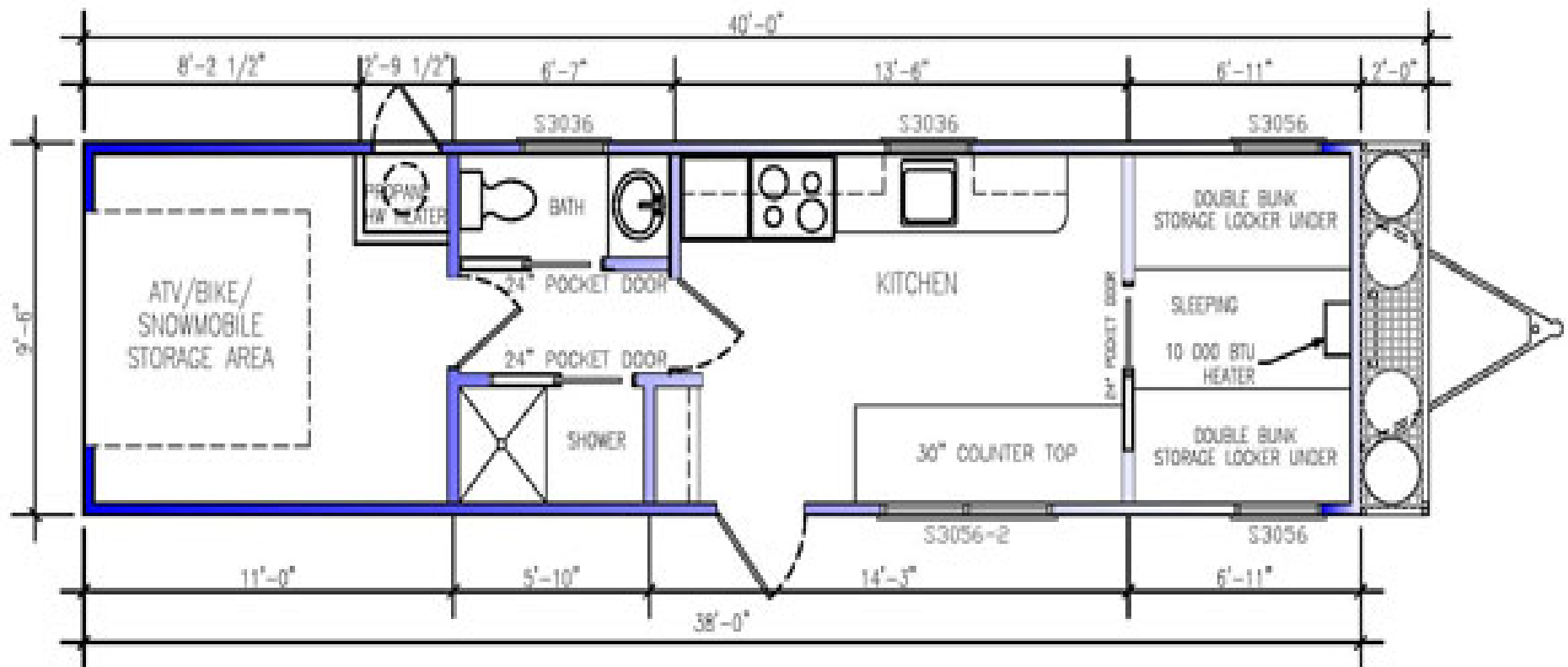
Portable Maintenance Shop



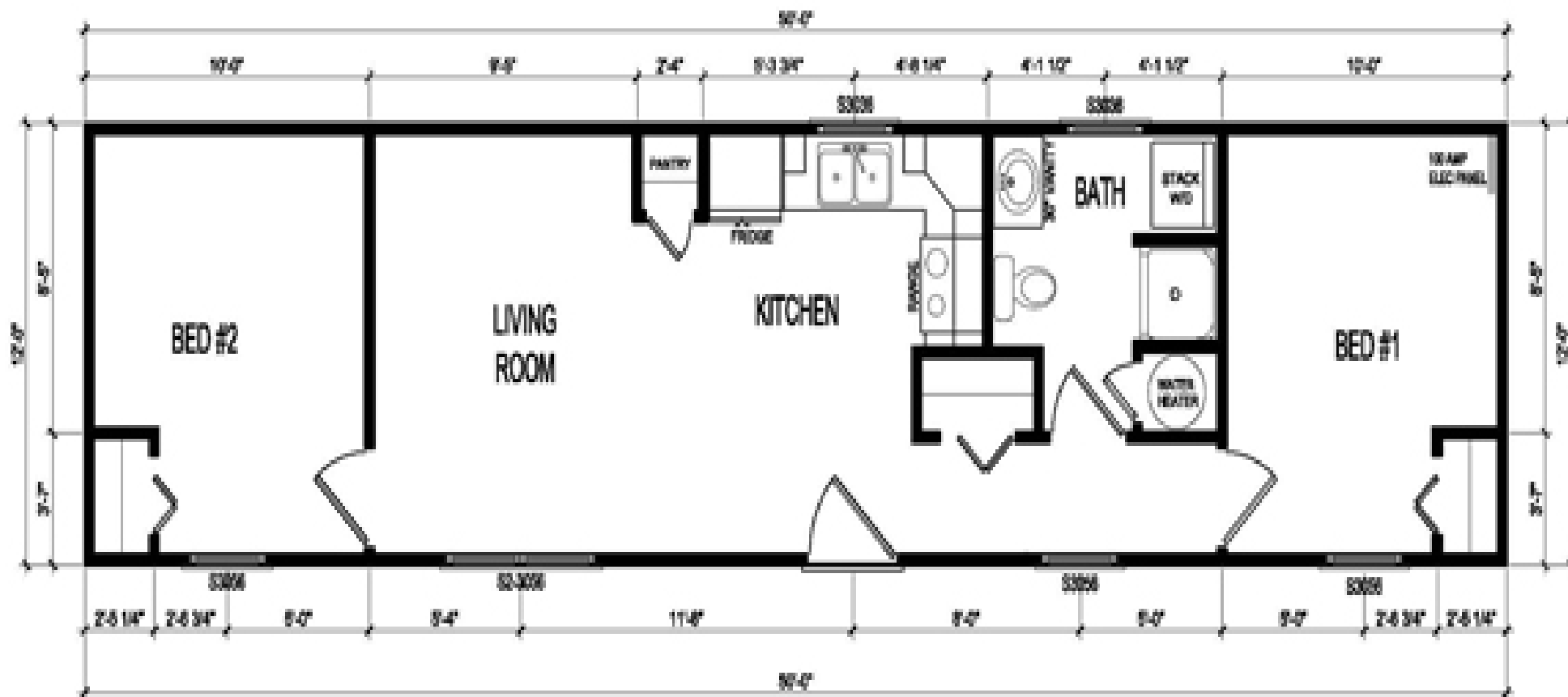
Portable Ice Fishing Shelter



Portable Fishing/Hunting Camp



40' x 10'
SPORTSMAN RECREATION VEHICLE



50x12 Cottage